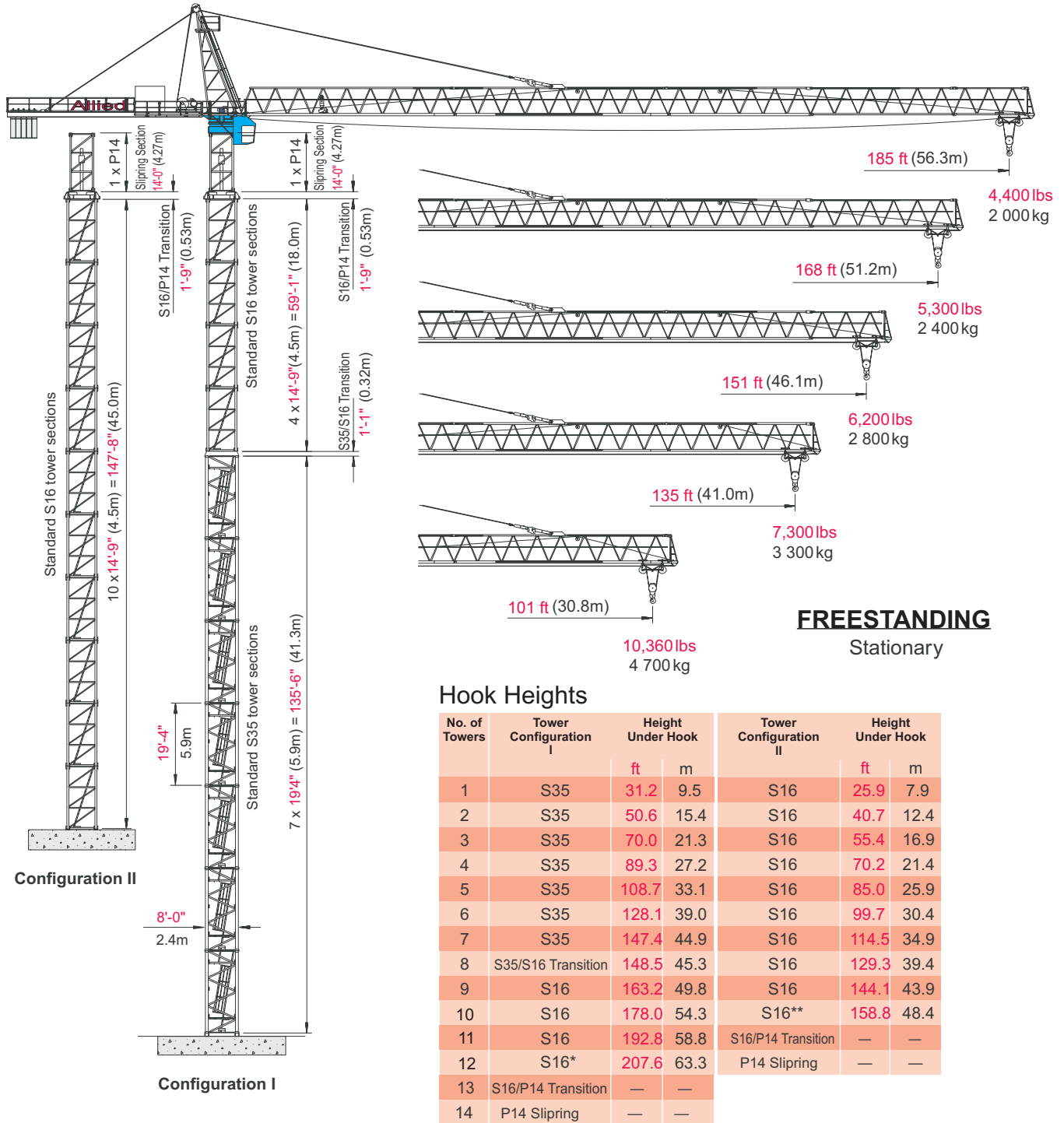
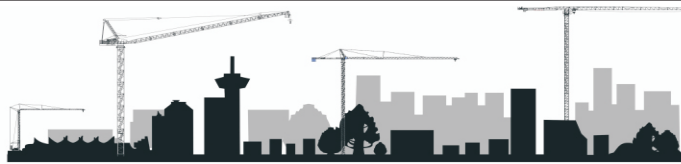


Pecco SK 140



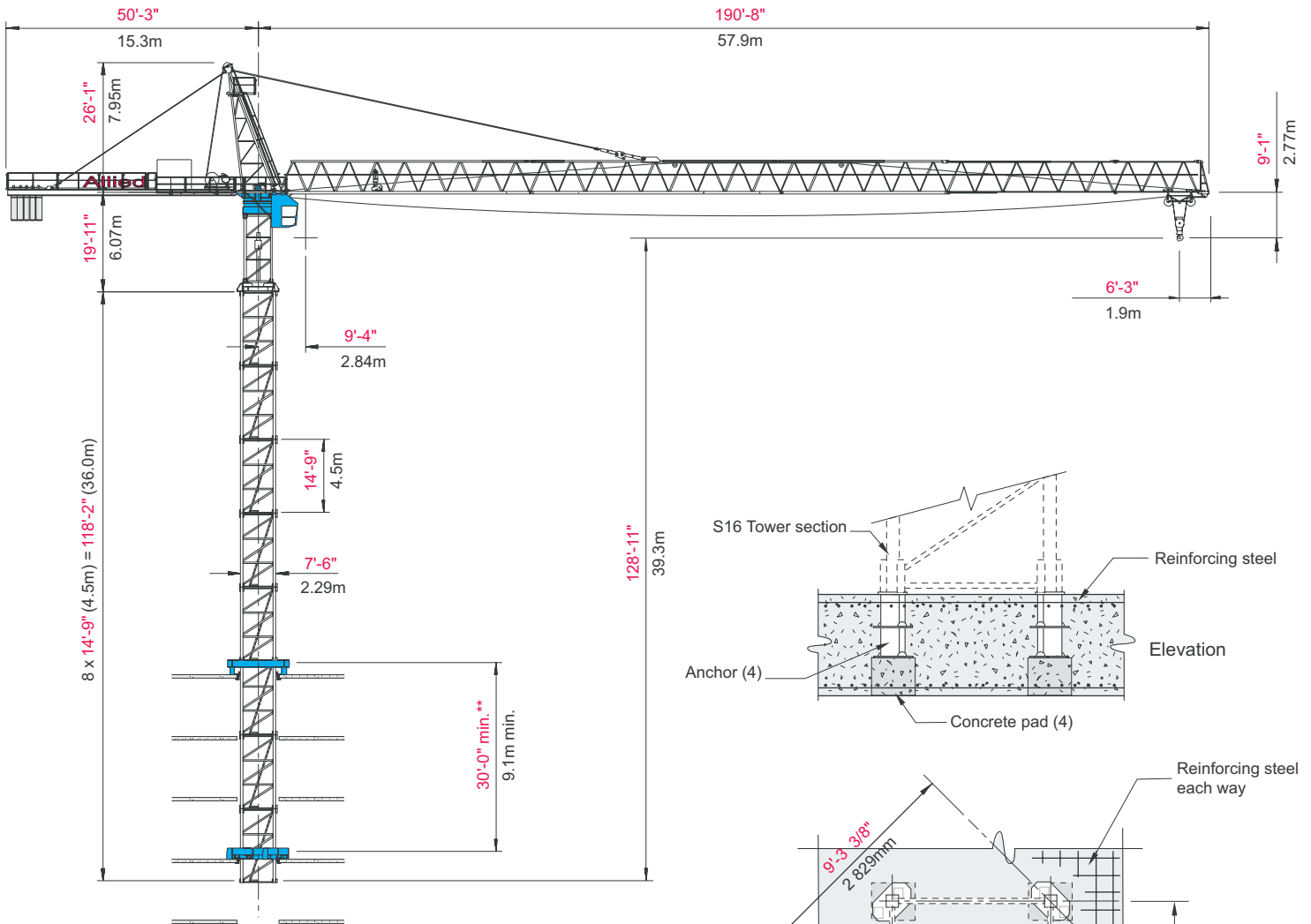
* Remove top climbing unit from crane prior to operating crane at maximum hook height.
 ** Lower top climbing unit to base of crane prior to operating crane at maximum hook height.
 Other tower combinations are possible.



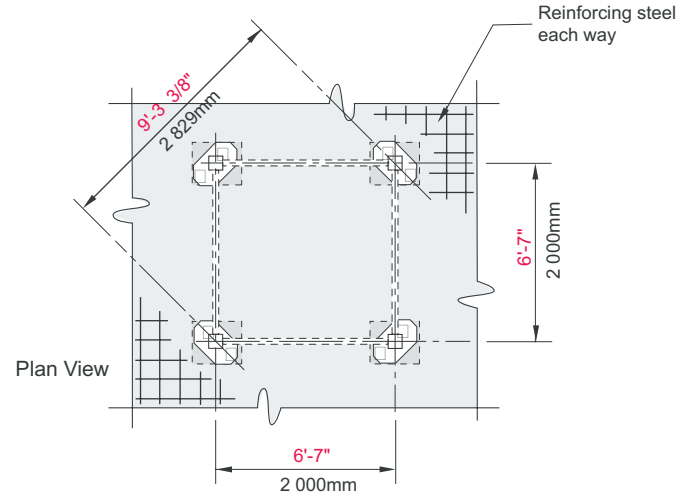
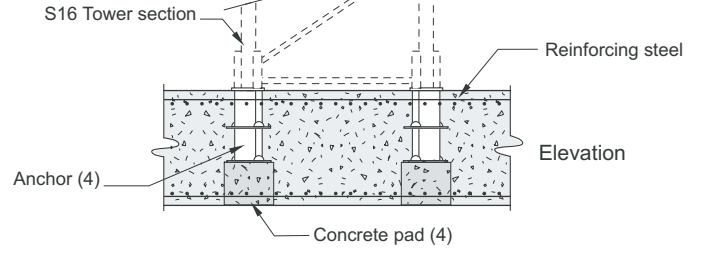
ALLIED CRANE LTD

Configurations

Pecco SK 140



BOTTOM CLIMBING
with S16 Tower Sections
Inside Structure



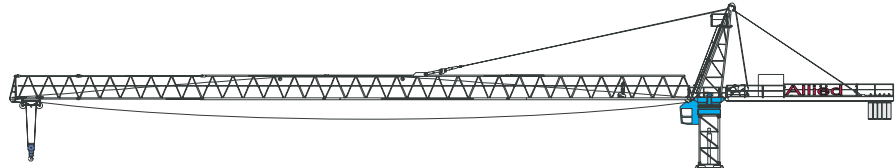
FOUNDATION DETAILS
with S16 Tower Sections
Concrete Slab

IMPORTANT! Please consult crane's operation manual before erecting, operating, climbing and dismantling crane.



Configurations

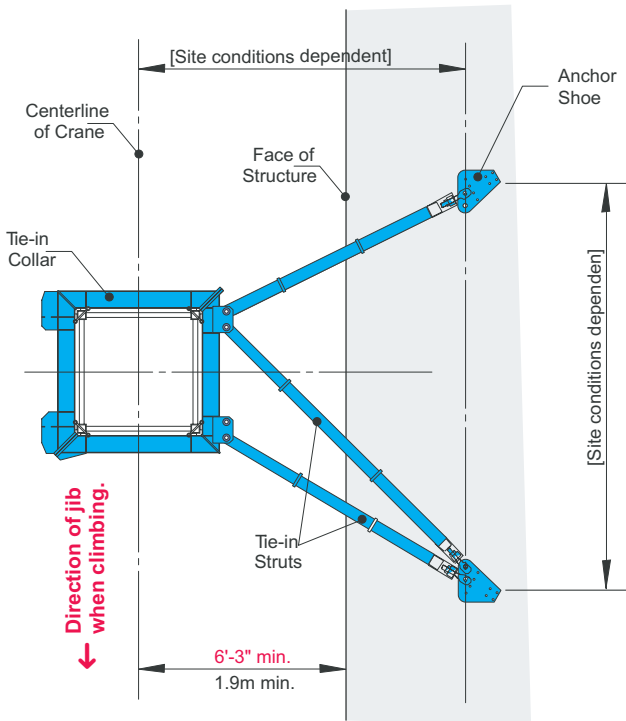
Pecco SK 140



NOTE! If hook height exceeds 330 ft (100m), the number of tower sections above the uppermost tie-in location **MUST** be reduced by 1 tower section.

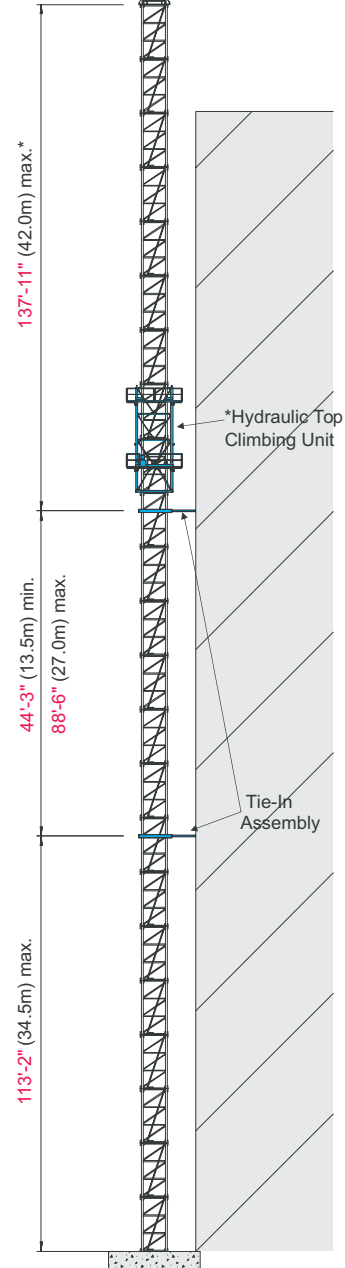
* Lower the top climbing unit to the uppermost tie-in prior to operating crane at maximum hook height.

** **NOTE!** When bottom climbing, the minimum distance between climbing frames is determined by the number of tower sections installed above uppermost frame and length of jib assembly installed.



TIE-IN ASSEMBLY
Plan View

NOTE! The tie-in assembly shown above is an example of a typical installation. Please note, however, that factors determining the installation of tie-in assemblies may vary due to project specific criteria.



TOP CLIMBING
with S16 Tower Sections
Tied to Structure

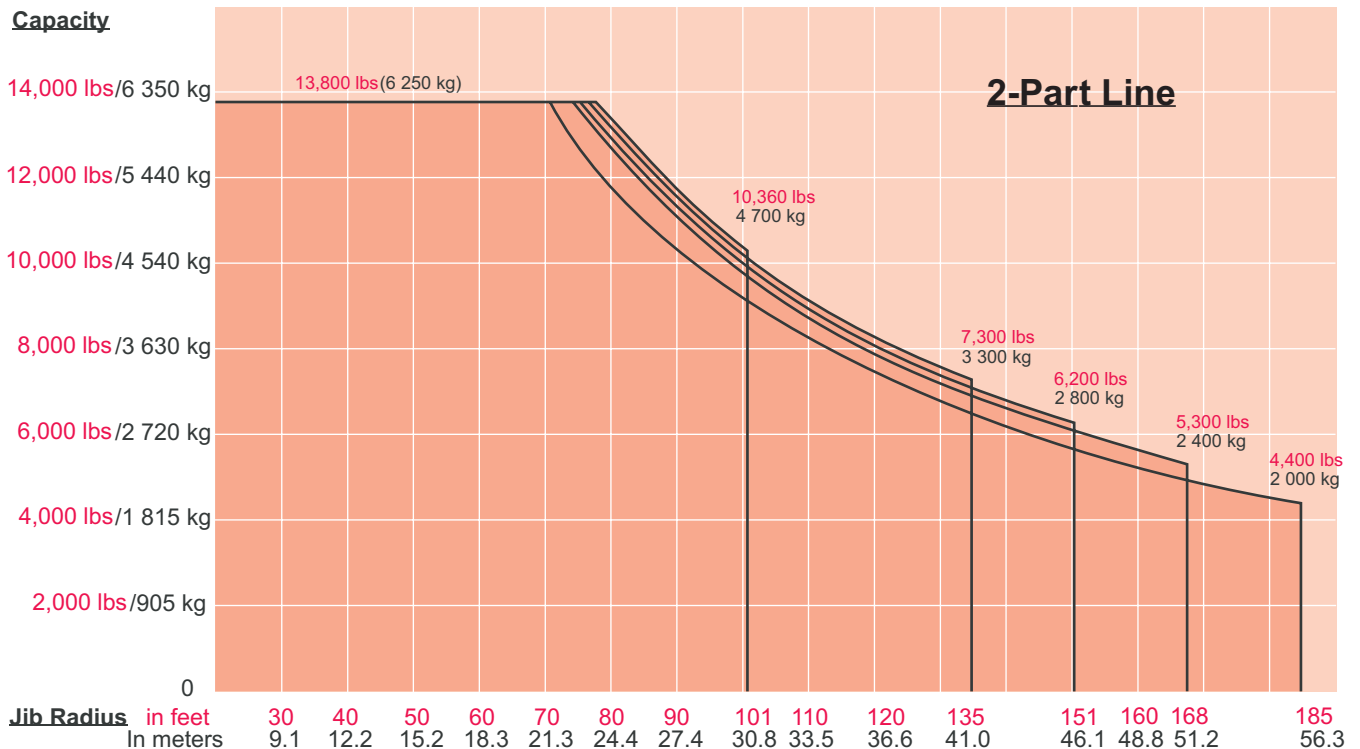


Radius and Capacities

Pecco SK 140

2-Part Line

Hook Radius	Maximum Capacity – Radius	ft	43	53	62	72	82	92	101	112	121	128	135	144	151	161	168	177	185
		m	13.0	16.0	19.0	22.0	25.0	28.0	30.8	34.0	37.0	39.0	41.0	44.0	46.1	49.0	51.2	54.0	56.3
185 ft 56.3m	13,800 lbs – 71 ft 6,250 kg – 21.8m	lbs	13,808	13,800	13,800	13,640	11,840	10,360	9,190	8,250	7,450	6,990	6,570	6,020	5,560	5,270	4,890	4,650	4,400
		kg	6,250	6,250	6,250	6,200	5,370	4,700	4,170	3,740	3,380	3,170	2,980	2,730	2,520	2,390	2,220	2,110	2,000
168 ft 51.2m	13,800 lbs – 75 ft 6,250 kg – 22.8m	lbs	13,800	13,800	13,800	13,800	12,480	10,930	9,720	8,710	7,870	7,390	6,970	6,390	5,890	5,600	5,300		
		kg	6,250	6,250	6,250	6,250	5,660	4,960	4,410	3,950	3,570	3,350	3,160	2,900	2,670	2,540	2,400		
151 ft 46.1m	13,800 lbs – 76 ft 6,250 kg – 23.2m	lbs	13,800	13,800	13,800	13,800	12,740	11,180	9,920	8,910	8,050	7,560	7,120	6,530	6,200				
		kg	6,250	6,250	6,250	6,250	5,780	5,070	4,500	4,040	3,650	3,430	3,230	2,960	2,800				
135 ft 41.0m	13,800 lbs – 77 ft 6,250 kg – 23.6m	lbs	13,800	13,800	13,800	13,800	13,010	11,400	10,140	9,080	8,220	7,720	7,300						
		kg	6,250	6,250	6,250	6,250	5,900	5,170	4,600	4,120	3,730	3,500	3,300						
101 ft 30.8m	13,800 lbs – 78 ft 6,250 kg – 23.9m	lbs	13,800	13,800	13,800	13,800	13,230	11,680	10,360										
		kg	6,250	6,250	6,250	6,250	6,000	5,300	4,700										



Hoist Speed and Capacity

Hoist Unit	2-Part Line				
	Gear	Capacity	Line Speed	Capacity	Line Speed
105 hp (78 kW) AC hoist unit 4-speed gearbox Remote-controlled gear shifting Eddy current brake	1	up to 13,800 lbs	@ 110 fpm	up to 6 250 kg	@ 34 m/min
	2	up to 13,800 lbs	@ 178 fpm	up to 6 250 kg	@ 54 m/min
	3	up to 9,260 lbs	@ 282 fpm	up to 4 200 kg	@ 86 m/min
	4	up to 5,500 lbs	@ 440 fpm	up to 2 500 kg	@ 134 m/min

NOTE! Capacities and line speeds indicated will vary depending on the amount of hoist rope installed. This crane model may be equipped with a hoist unit other than that specified in the data above. To verify, check the serial number of the crane and refer to the Pecco SK 140 Operation Manual for additional information.

Motor Information

Drive Unit	Horsepower	Kilowatts	Speed	
Trolley (2 part line)	6.5 hp	4.8 kW	12.5 – 250 fpm	4 – 76 m/min
Swing	2 x 6.5 hp	2 x 4.8 kW	1.0 rpm	

Power Requirements

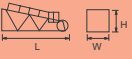
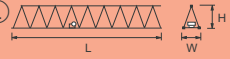
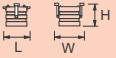



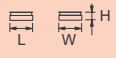
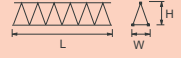

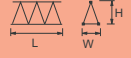



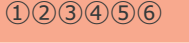

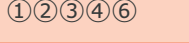
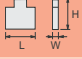
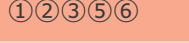
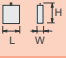
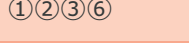


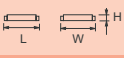

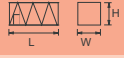
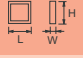
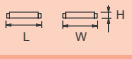

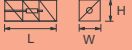

480 Volts — 3-phase — 60-cycle — 250 Amperes service with **105 hp** (78 kW) hoist unit

Specifications subject to change without notice.



Specifications

Pecco SK 140

Description	Dimensions L x W x H	Weight	Description	Dimensions L x W x H	Weight
Tower Top	 27'-4" x 6'-7" x 8'-5" 8.3m x 2.0m x 2.57m	3,800 lbs 1 725 kg	Jib Section ^①	 50'-10" x 6'-2" x 8'-0" 15.5m x 1.89m x 2.43m	6,400 lbs 2,905 kg
Turntable (Complete) Upper & Lower Parts	 8'-0" x 7'-9" x 6'-4" 2.43m x 2.35m x 1.94m	9,300 lbs 4 220 kg	Jib Section ^②	 51'-2" x 5'-7" x 7'-4" 15.6m x 1.69m x 2.24m	5,500 lbs 2,495 kg
Turntable Upper Part ¹	 8'-0" x 7'-9" x 3'-9" 2.43m x 2.35m x 1.15m	5,600 lbs 2,540 kg	Jib Section ^③	 34'-5" x 5'-7" x 6'-8" 10.5m x 1.69m x 2.03m	2,800 lbs 1,270 kg
Turntable Lower Part ²	 6'-3" x 6'-1" x 2'-7" 1.9m x 1.85m x 0.79m	3,700 lbs 1,680 kg	Jib Section ^④	 34'-5" x 5'-6" x 6'-7" 10.5m x 1.68m x 2.02m	1,900 lbs 860 kg
Hoist Unit with Frame ³ (105 hp/78 kW)	 8'-4" x 5'-1" x 3'-6" 2.54m x 1.55m x 1.07m	5,800 lbs 2,630 kg	Jib Section ^⑤	 17'-8" x 5'-6" x 7'-0" 5.38m x 1.68m x 2.14m	1,000 lbs 455 kg
Operator's Cab	 6'-1" x 3'-11" x 6'-11" 1.85m x 1.2m x 2.1m	800 lbs 365 kg	Jib Section ^⑥	 2'-9" x 6'-1" x 7'-5" 0.85m x 1.86m x 2.26m	450 lbs 205 kg
Cab Access Platform	 10'-4" x 6'-0" x 4'-9" 3.14m x 1.82m x 1.45m	1,200 lbs 545 kg	Jib Assembly ⁵ 185-ft (56.3m)	 ① ② ③ ④ ⑤ ⑥ 185-ft (56.3m)	19,550 lbs 8,870 kg
Counterjib ⁴	 46'-4" x 5'-11" x 7'-4" 14.1m x 1.8m x 2.23m	16,500 lbs 7,485 kg	Jib Assembly ⁵ 168-ft (51.2m)	 ① ② ③ ④ ⑥ 168-ft (51.2m)	18,550 lbs 8,415 kg
Counterweight Block A	 8'-0" x 1'-2" x 7'-0" 2.45m x 0.35m x 2.13m	7,715 lbs 3,500 kg	Jib Assembly ⁵ 151-ft (46.1m)	 ① ② ③ ⑤ ⑥ 151-ft (46.1m)	17,650 lbs 8,005 kg
Counterweight Block B	 4'-6" x 1'-2" x 4'-8" 1.38m x 0.35m x 1.42m	3,305 lbs 1,500 kg	Jib Assembly ⁵ 135-ft (41.0m)	 ① ② ③ ⑥ 135-ft (41.0m)	16,650 lbs 7,550 kg
Tower Section S16	 14'-11" x 7'-7" x 7'-7" 4.55m x 2.3m x 2.3m	5,500 lbs 2,500 kg	Jib Assembly ⁵ 101-ft (30.8m)	 ① ② ⑥ 101-ft (30.8m)	15,035 lbs 6,820 kg
Transition Section S16/P14	 8'-7" x 8'-7" x 2'-0" 2.6m x 2.6m x 0.61m	4,000 lbs 1,815 kg	Top Climbing Unit with Hydraulics (S16)	 23'-6" x 9'-9" x 9'-3" 7.16m x 2.97m x 2.82m	13,200 lbs 5,990 kg
Tower Section S35	 19'-5" x 7'-10" x 8'-0" 5.92m x 2.4m x 2.44m	8,900 lbs 4,040 kg	Tie-in Collar (S16)	 10'-11" x 1'-7" x 10'-2" 3.33m x 0.48m x 3.1m	3,300 lbs 1,500 kg
Transition Section S35/S16	 8'-1" x 7'-9" x 1'-1" 2.46m x 2.36m x 0.33m	1,610 lbs 730 kg	Trolley	 6'-7" x 6'-3" x 3'-2" 2.0m x 1.9m x 0.97m	750 lbs 340 kg
Slipping Tower Section (P14)	 14'-0" x 6'-2" x 6'-2" 4.27m x 1.88m x 1.88m	4,250 lbs 1,930 kg	Hook Block	 2'-2" x 1'-0" x 3'-8" 0.66m x 0.3m x 1.12m	800 lbs 365 kg

NOTE: Weights and dimensions are approximate. Scale components before lifting.

- ¹ Turntable Upper Part includes swing motors. Does not include slewing ring and slewing ring support.
- ² Turntable Lower Part includes slewing ring and slewing ring support. Does not include Upper Part with swing motors.
- ³ Does not include wire rope.
- ⁴ Includes **105 hp** (78 kW) hoist unit, electrical panel, handrails and suspension. Does not include wire rope.
- ⁵ Jib Assemblies include jib sections, pendant cables, trolley drive unit, trolley wire rope, trolley and hook block.



ALLIED CRANE LTD

www.alliedcraneltd.ca

604-467-4130

alliedcrane@telus.net